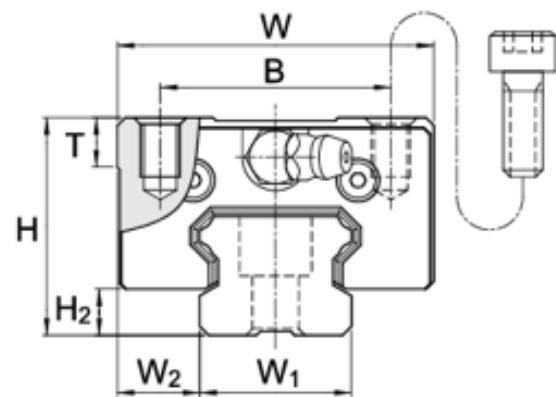
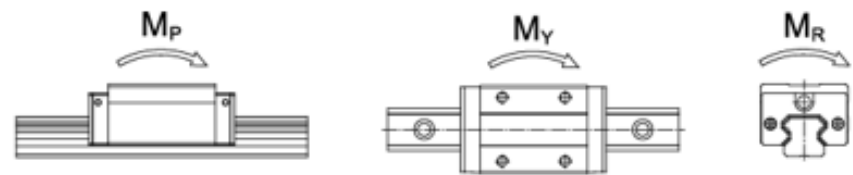
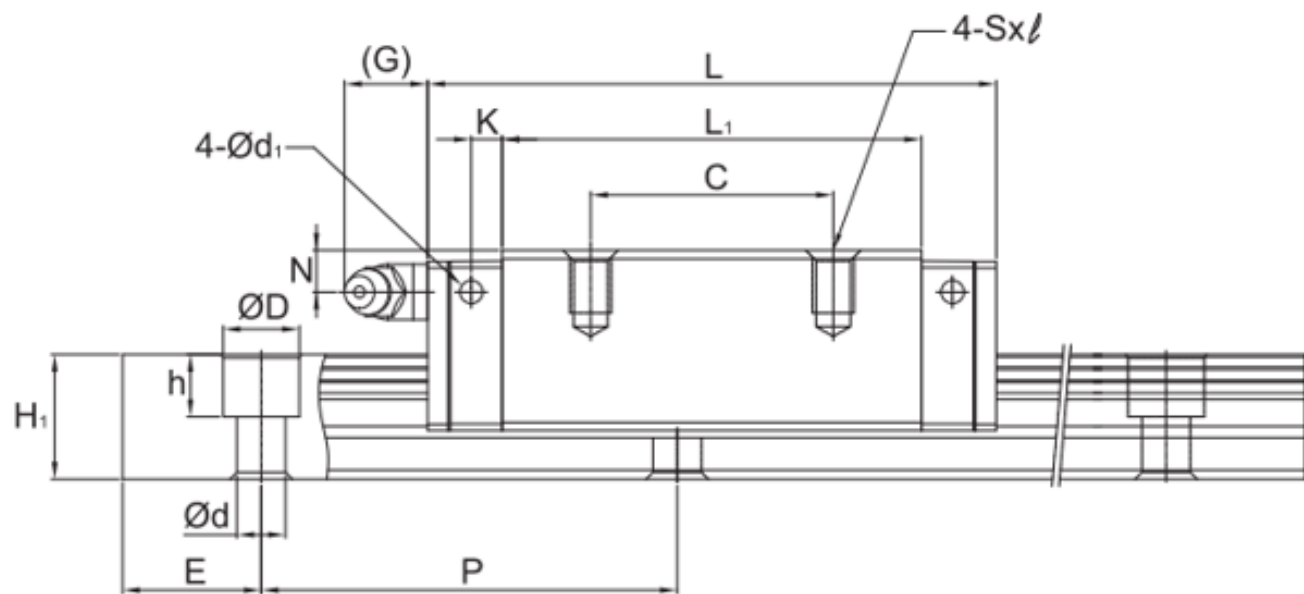


# SMB-S



Model No.	External dimension					Carriage dimension									
	Height H	Width W	Length L	$W_2$	$H_2$	B	C	$S \times l$	$L_1$	T	N	G	K	$d_1$	Grease Nipple
SMB 15 S	24	34	57.6	9.5	4.5	26	26	M4×6	40.5	6	6	5.5	3.4	3.3	G-M4
SMB 20 S	28	42	69	11	6	32	32	M5×7	48	6	5.5	12	3.6	3.3	G-M6
SMB 25 S	33	48	83.6	12.5	7	35	35	M6×9	60.5	8	6	12	5	5.3	G-M6
SMB 30 S	42	60	96	16	9.5	40	40	M8×12	70	8	8	12	6	5.3	G-M6

**Note:** Rail mounting holes for M3 (6x4.5x3.5) and M4 (7.5x5.3x4.5) are available for MSB15 rail. The codes of rail type are MSB15R for M3 mounting holes, and MSB15U for M4 mounting holes.

**Note:** The basic dynamic load rating C of ball type is based on the 50 km for nominal life. The conversion between C for 50 km and  $C_{100}$  for 100 km is  $C=1.26 \times C_{100}$ .

**Note\*:** Single: Single carriage/ Double: Double carriages closely contacting with each other.

Model No.	Rail dimension					Basic load rating		Static moment rating				Weight		
	Width $W_1$	Height $H_1$	Pitch $P$	E std.	$D \times h \times d$	Dynamic $C$ kN	Static $C_0$ kN	$M_x$ kN-m		$M_y$ kN-m		$M_n$ kN-m	Carriage kg	Rail kg/m
								Single*	Double*	Single*	Double*			
<b>SMB 15 S</b>	15	12.5	60	20	6x4.5x3.5 (7.5x5.3x4.5)	9.9	15.6	0.08	0.6	0.08	0.6	0.12	0.12	1.2
SMB 20 S	20	15	60	20	9.5x8.5x6	13.8	22	0.15	0.96	0.15	0.96	0.22	0.19	2
<b>SMB 25 S</b>	23	18	60	20	11x9x7	22.2	34.4	0.3	1.82	0.3	1.82	0.4	0.32	3
SMB 30 S	28	23	80	20	11x9x7	32.5	49.5	0.52	3.05	0.52	3.05	0.69	0.61	4.4