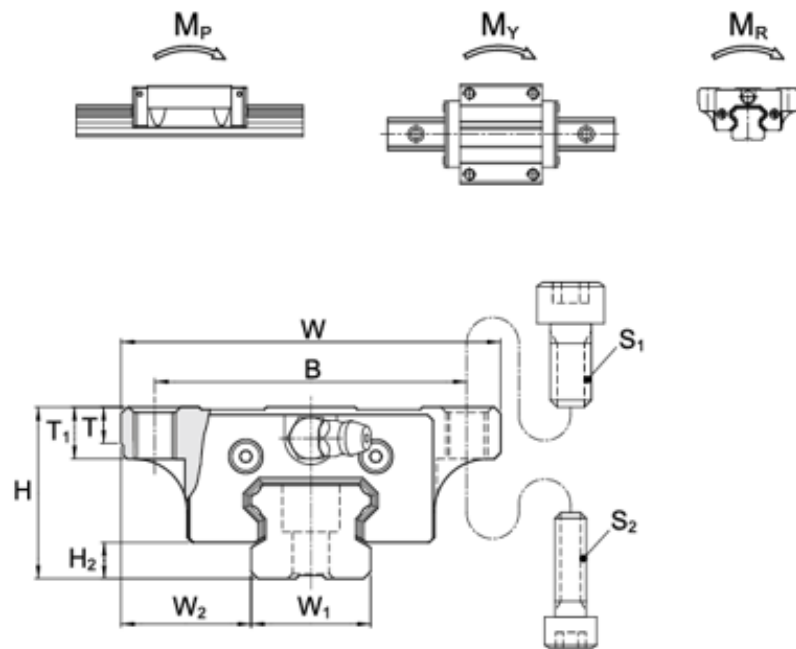
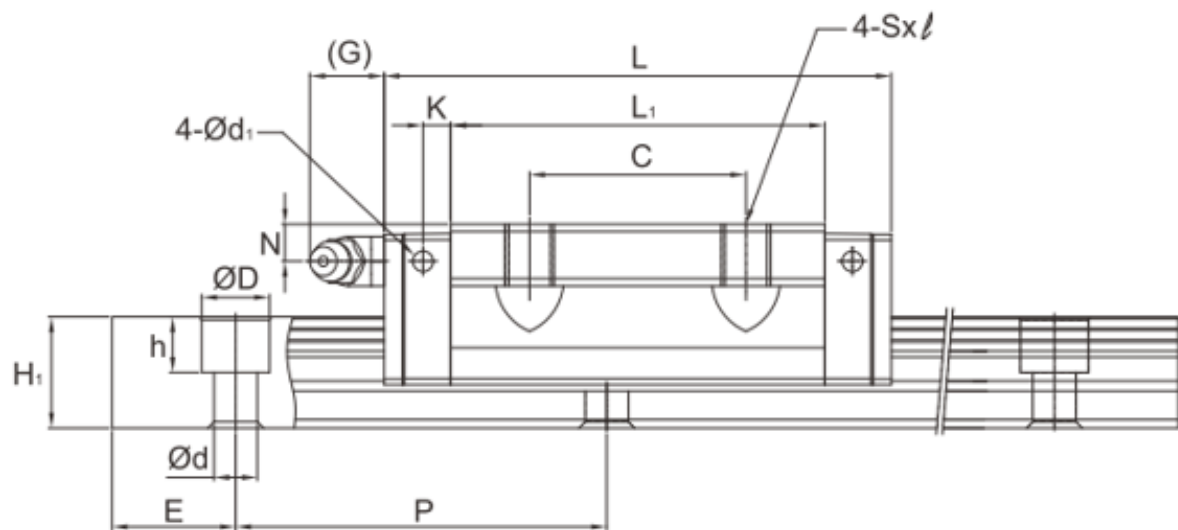


SMB-E



Model No.	Bolt Size	
	S_1	S_2
SMB 15	M5	M4
SMB 20	M6	M5
SMB 25	M8	M6
SMB 30	M10	M8

Model No.	External dimension					Carriage dimension										
	Height H	Width W	Length L	W_2	H_2	B	C	$S \times l$	L_1	T	T_1	N	G	K	d_1	Grease Nipple
SMB 15 E	24	52	57.6	18.5	4.5	41	26	M5×7	40.5	5	7	6	5.5	3.4	3.3	G-M4
SMB 20 E	28	59	69	19.5	6	49	32	M6×9	48	5	9	5.5	12	3.6	3.3	G-M6
SMB 25 E	33	73	83.6	25	7	60	35	M8×10	60.5	7	10	6	12	5	5.3	G-M6
SMB 30 E	42	90	96	31	9.5	72	40	M10×10	70	7	10	8	12	6	5.3	G-M6

Note: Rail mounting holes for M3 (6x4.5x3.5) and M4 (7.5x5.3x4.5) are available for MSB15 rail. The codes of rail type are MSB15R for M3 mounting holes, and MSB15U for M4 mounting holes.

Note: The basic dynamic load rating C of ball type is based on the 50 km for nominal life. The conversion between C for 50 km and C_{100} for 100 km is $C=1.26 \times C_{100}$.

Note*: Single: Single carriage/ Double: Double carriages closely contacting with each other.

Unit: mm

Model No.	Rail dimension					Basic load rating		Static moment rating				Weight		
	Width W_1	Height H_1	Pitch P	E std.	$D \times h \times d$	Dynamic C kN	Static C_0 kN	M_x kN-m		M_y kN-m		M_R kN-m	Carriage kg	Rail kg/m
								Single*	Double*	Single*	Double*			
SMB 15 E	15	12.5	60	20	6x4.5x3.5 (7.5x5.3x4.5)	9.9	15.6	0.08	0.6	0.08	0.6	0.12	0.16	1.2
SMB 20 E	20	15	60	20	9.5x8.5x6	13.8	22	0.15	0.96	0.15	0.96	0.22	0.25	2
SMB 25 E	23	18	60	20	11x9x7	22.2	34.4	0.3	1.82	0.3	1.82	0.4	0.46	3
SMB 30 E	28	23	80	20	11x9x7	32.5	49.5	0.52	3.05	0.52	3.05	0.69	0.79	4.4