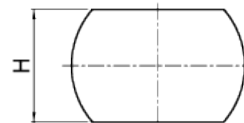
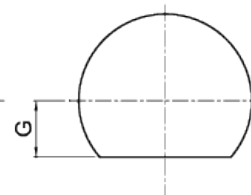


法蘭:A



法蘭:B



法蘭:C

Unit: *mm*

SCREW SIZE		BALL DIA.	EFFECTIVE TURNS	MODIFIED LOAD CAPACITY (<i>kgf</i>)		BALLNUT DIMENSION											
O.D.	LEAD			Dynamic (1×10^6 REV.) Cam	Static Coam	O.D.	Length	Flange						Oil Hole	Assembly Hole	STIFFNESS	Nut Model NO.
						D	L	A	T	W	G	H	Q	X	<i>kgf/μm</i>		
16	5	3.175	3	1050	2200	28	42	48	10	38	20	40	M6×1P	5.5	17	FSIN1605B-3.0P	
20	5	3.175	4	1530	3720	36	50	58	12	47	22	44	M6×1P	6.5	25	FSIN2005B-4.0P	
25	5	3.175	4	1700	4720	40	50	62	12	51	24	48	M6×1P	6.5	37	FSIN2505B-4.0P	
	10	4.762	4	2900	6990		85	62	12	51	24	48	M6×1P	6.5	32	FSIN2510D-4.0P	
32	5	3.175	4	1900	6090	50	50	80	12	65	31	62	M6×1P	9	50	FSIN3205B-4.0P	
	10	6.35	4	4720	11670	50	80	80	13	65	31	62	M6×1P	9	50	FSIN3210F-4.0P	
40	5	3.175	4	2090	7670	63	54	93	15	78	35	70	M8×1P	9	52	FSIN4005B-4.0P	
	10	6.35	4	5310	14850		82								60	FSIN4010F-4.0P	
50	10	6.35	4	5890	18780	75	88	110	18	93	42.5	85	M8×1P	11	70	FSIN5010F-4.0P	

Note: 1. Cam and Coam represent the enhanced dynamic- and static load. Their calculations referred to the standard of DIN 69051.

2. Stiffness of nut: Stiffness values listed above are derived from theoretical formula to the elastic deformation between thread grooves and balls while axial load is 30% dynamic load rating.