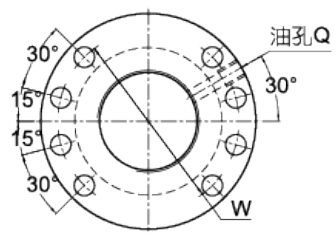
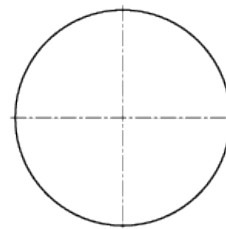
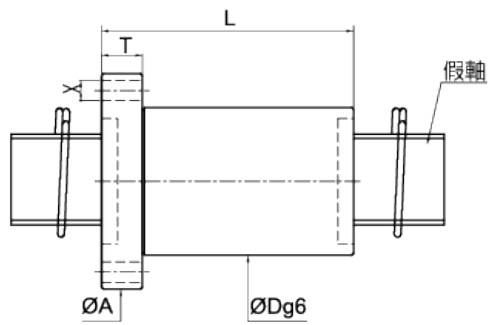


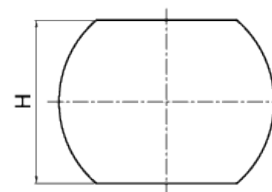
型式:I



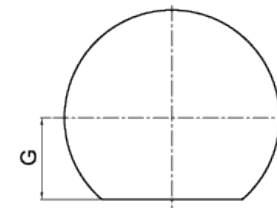
型式:II



法蘭:A



法蘭:B



法蘭:C

SCREW SIZE		BALL DIA.	EFFECTIVE TURNS circuit x number of thread	MODIFIED LOAD CAPACITY (kgf)		BALLNUT DIMENSION											
O.D.	LEAD			Dynamic (1×10 ⁶ REV.) Cam	Static Coam	O.D.	Length	Flange						Oil Hole	Assembly Hole	STIFFNESS	Nut Model NO.
								D	L	A	T	W	G				
12	4	2.381	3×1	410	990	24	28	44	10	34	16	32	I	M6x1P	4.5	13	FSDW1204A-3.0P
14	4	2.381	3×1	460	1210	26	28	46	10	36	17	34	I	M6x1P	4.5	14	FSDW1404A-3.0P
			4×1	590	1610											32	18
15	5	3.175	3×1	550	1260	29	32	51	10	39	18.5	37	I	M6x1P	5.5	14	FSDW1405B-3.0P
	10	3.175	3×1	560	1340	29	47	51	10	39	19	38	I	M6x1P	5.5	15	FSDW1510B-3.0P
16	20	3.175	2×1	370	900	29	58	51	10	39	19	38	I	M6x1P	5.5	10	FSDW1520B-2.0P
	5	3.175	3×1	600	1460	29	35	51	10	39	19	38	I	M6x1P	5.5	16	FSDW1605B-3.0P
16	10	3.175	3×1	580	1440	29	50	51	10	39	19	38	I	M6x1P	5.5	15	FSDW1610B-3.0P
	16	3.175	2×1	400	950	29	51	51	10	39	19	38	I	M6x1P	5.5	11	FSDW1616B-2.0P
20	4	2.381	3×1	520	1660	32	28	54	12	42	19	38	I	M6x1P	5.5	18	FSDW2004A-3.0P
	5	3.175	3×1	670	1860	36	35	62	12	49	24	48	I	M6x1P	6.6	19	FSDW2005B-3.0P
	10	4.762	3×1	1320	3390	40	52	62	12	51	24	48	I	M6x1P	6.6	21	FSDW2010D-3.0P
	20	3.175	2×1	450	1200	36	56	62	12	49	24	48	I	M6x1P	6.6	13	FSDW2020B-2.0P
	40	3.175	1×2	370	1040	36	56	62	12	49	24	48	I	M6x1P	6.6	11	FSDW2040B-1.6P
25	4	2.381	3×1	580	2120	37	28	62	12	49	22	44	I	M6x1P	6.6	21	FSDW2504A-3.0P
	5	3.175	3×1	740	2350	40	36	62	12	51	24	48	I	M6x1P	6.6	21	FSDW2505B-3.0P
	10	4.762	4×1	1920	5700	45	63	65	15	54	25.5	51	I	M6x1P	6.6	32	FSDW2510D-4.0P
		6.35	5×1	3380	9550	51	78	84	16	67	32	64	I	M6x1P	9	42	FSDW2510F-5.0P
25	3.969	2×1	780	2260	43	71	64	12	51	24	48	I	M6x1P	6.6	16	FSDW2525C-2.0P	
28	5	3.175	5×1	1240	4530	43	48	65	12	51	24	48	I	M8x1P	6.6	38	FSDW2805B-5.0P
32	5	3.175	4×1	1080	4130	50	41	87	16	72	34.5	69	I	M8x1P	9	34	FSDW3205B-4.0P
	10	6.35	5×1	3820	12030	57	78	87	16	72	34.5	69	I	M8x1P	9	50	FSDW3210F-5.0P
32	32	4.762	2×1	1100	3420	53	90	87	16	72	34.5	69	I	M8x1P	9	20	FSDW3232D-2.0P

Note: Stiffness of nut: Stiffness values listed above are derived from theoretical formula to the elastic deformation between thread grooves and balls while axial load is 30% dynamic load rating.

Unit: mm

SCREW SIZE		BALL DIA.	EFFECTIVE TURNS circuit × number of thread	MODIFIED LOAD CAPACITY (kgf)		BALLNUT DIMENSION											
O.D.	LEAD			Dynamic (1×10 ⁶ REV.) Cam	Static Coam	O.D.	Length	Flange						Oil Hole	Assembly Hole	STIFFNESS	Nut Model NO.
								D	L	A	T	W	G				
36	10	6.35	3×1	2570	8000	61	58	91	18	76	34	68	II	M6x1P	9	52	FSDW3610F-3.0P
			5×1	4080	13710	61	78									55	FSDW3610F-5.0P
40	5	3.175	4×1	1180	5200	60	42	91	18	76	34	68	II	M8x1P	9	40	FSDW4005B-4.0P
	10	6.35	5×1	4290	15290	65	78	95	18	80	36	72	II	M8x1P	9	59	FSDW4010F-5.0P
	20	6.35	4×1	3480	11990	65	110	98	18	83	37	74	II	M8x1P	11	48	FSDW4020F-4.0P
	40		2×1	1810	5770											25	FSDW4040F-2.0P
50	10	6.35	5×1	4780	19360	75	78	118	18	100	46	92	II	M8x1P	11	70	FSDW5010F-5.0P
63	10	6.35	5×1	5230	24240	88	84	135	22	115	50	110	II	M8x1P	14	84	FSDW6310F-5.0P
	20	6.35	5×1	5320	24930		130									137	FSDW6320F-5.0P
80	10	6.35	5×1	5840	31540	106	80	165	25	145	65	130	II	M8x1P	14	101	FSDW8010F-5.0P

Note: Stiffness of nut: Stiffness values listed above are derived from theoretical formula to the elastic deformation between thread grooves and balls while axial load is 30% dynamic load rating.