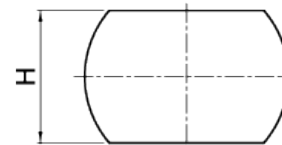
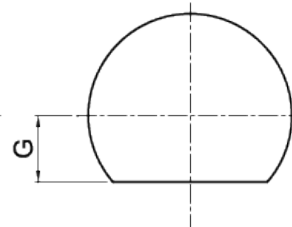


法蘭:A



法蘭:B



法蘭:C

SCREW SIZE		BALL DIA.	EFFECTIVE TURNS circuit × number of thread	MODIFIED LOAD CAPACITY (kgf)		BALLNUT DIMENSION									
O.D.	LEAD			Dynamic (1×10 ⁶ REV.) Cam	Static Coam	O.D.	Length	Flange					Oil Hole	Assembly Hole	Nut Model NO.
						D	L	A	T	W	G	H	Q	X	
12	5	2	3x1	630	1060	24	30	40	10	32	15	30	M5×0.8P	4.5	FSDU1205Z-3.0P
	10		3x1	620	1040	24	45	40	10	32	15	30	M5×0.8P	4.5	FSDU1210Z-3.0P
15	5	2.778	4x1	1130	2100	28	37	48	10	38	20	40	M6×1P	5.5	FSDU1505L-4P
	10		3x1	850	1530	28	47	48	10	38	20	40	M6×1P	5.5	FSDU1510L-3P
	16		2x1	580	1010	28	47	48	10	38	20	40	M6×1P	5.5	FSDU1516L-2P
	16		3x1	850	1570	28	63	48	10	38	20	40	M6×1P	5.5	FSDU1516L-3P
	20		2x1	560	970	28	58	48	10	38	20	40	M6×1P	5.5	FSDU1520L-2P
20	5	3.175	4x1	1570	3270	38	40	58	10	47	22	44	M6×1P	6.6	FSDU2005B-4.0P
	10		4x1	1560	3250	56	58	58	10	47	22	44	M6×1P	6.6	FSDU2010B-4.0P
	20		2x1	810	1550	56	58	58	10	47	22	44	M6×1P	6.6	FSDU2020B-2.0P
	20		3x1	1180	2430	76	78	58	10	47	22	44	M6×1P	6.6	FSDU2020B-3.0P
25	5	3.175	4x1	1750	4150	40	39	62	10	51	24	48	M6×1P	6.6	FSDU2505B-4.0P
	10		4x1	1740	4120	40	59	62	12	51	24	48	M6×1P	6.6	FSDU2510B-4.0P
	20		2x1	910	1990	40	59	62	12	51	24	48	M6×1P	6.6	FSDU2520B-2.0P
	25		2x1	900	1950	40	66	62	12	51	24	48	M6×1P	6.6	FSDU2525B-2.0P
	25		3x1	1290	3040	40	91	62	12	51	24	48	M6×1P	6.6	FSDU2525B-3.0P

SCREW SIZE		BALL DIA.	EFFECTIVE TURNS circuit × number of thread	MODIFIED LOAD CAPACITY (kgf)		BALLNUT DIMENSION										
O.D.	LEAD			Dynamic (1×10 ⁵ REV.) Cam	Static Coam	O.D.	Length	Flange					Oil Hole	Assembly Hole	Nut Model NO.	
						D	L	A	T	W	G	H	Q	X		
32	5	3.175	4x1	1940	5360	50	42	80	12	65	31	62	M6×1P	9	FSDU3205B-4.0P	
	10		4x1	2660	6710	50	62	80	12	65	31	62	M6×1P	9	FSDU3210C-4.0P	
	20		3.969	3x1	2000	4870	50	81	80	12	65	31	62	M6×1P	9	FSDU3220C-3.0P
	32			2x1	1350	3170	50	83	80	12	65	31	62	M6×1P	9	FSDU3232C-2.0P
	32			3x1	1980	4920	50	115	80	12	65	31	62	M6×1P	9	FSDU3232C-3.0P
38	10	6.35	4x1	5110	13800	63	66	93	14	78	35	70	M8×1P	9	FSDU3810F-4.0P	
	20		3x1	4030	9020	63	86	93	14	78	35	70	M8×1P	9	FSDU3820F-3.0P	
	40		2x1	2730	5890	63	103	93	14	78	35	70	M8×1P	9	FSDU3840F-2.0P	
	40		3x1	3980	7160	63	143	93	14	78	35	70	M8×1P	9	FSDU3840F-3.0P	
40	5	3.175	4x1	2130	6750	63	43	93	15	78	35	70	M8×1P	9	FSDU4005B-4.0P	
50	10	6.35	4x1	6070	16540	75	70	110	15	93	55	85	M8×1P	11	FSDU5010F-4P	
	20		4x1	6020	16440	75	110	110	15	93	55	85	M8×1P	11	FSDU5020F-4P	

Note:1. Cam and Coam represent the enhanced dynamic- and static load. Their calculations referred to the standard of DIN 69051.

2. Stiffness of nut: Stiffness values listed above are derived from theoretical formula to the elastic deformation between thread grooves and balls while axial load is 30% dynamic load rating.