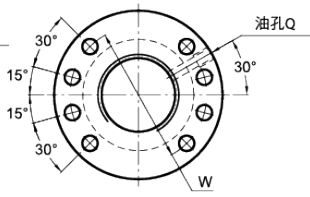
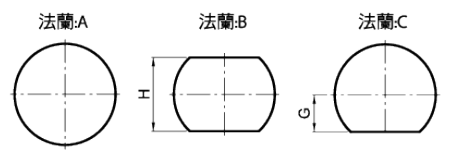
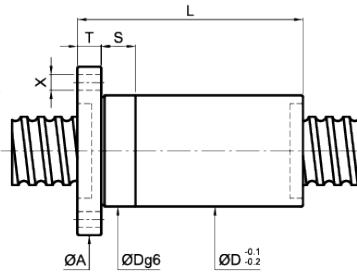


型式 I



型式 II



Unit: mm

SCREW SIZE		BALL DIA.	EFFECTIVE TURNS	MODIFIED LOAD CAPACITY (kgf)		NUT		FLANGE						FIT	OIL HOLE	BOLT	STIFFNESS
O.D.	LEAD			Dynamic (1×10 ⁶ REV.) Cam	Static Coam	Dg6	L	A	T	W	G	H	TYPE	S	Q	X	kgf/μm
12	4	2.381	3	610	1190	24	28	44	10	34	16	32	I	10	M6×1P	4.5	20
	5		3	610	1190		32										20
	10		3	590	1160		45										20
	20		2	390	770		54										14
14	4	2.381	3	680	1430	26	28	46	10	36	16	32	I	10	M6×1P	4.5	23
	5	3.175	3	820	1520	28	32	49	10	36	16	32	I	10	M6×1P	4.5	25
15	5	3.175	3	850	1640	29	35	51	10	39	19	38	I	10	M6×1P	5.5	26
	10		3	840	1610		47										26
	20		2	560	1050		58										18
16	5	3.175	3	890	1760	29	35	51	10	39	19	38	I	10	M6×1P	5.5	27
	10		3	870	1740	50	27										
	16		2	600	1150	51	19										
20	4	2.381	3	780	2000	32	28	54	12	42	19	38	I	12	M6×1P	5.5	29
	5	3.175	4	1300	3030	36	40	62	12	49	24	48	I	12	M6×1P	6.6	43
	10		3	990	2220		47										33
	20		2	670	1450		56										23
	6	3.969	3	1540	3310	37	38	62	12	49	23	46	I	12	M6×1P	6.6	34
	8		3	1540	3300		45										34
10	4.762	4	2560	5530	40	62	62	12	51	24	48	I	15	M6×1P	6.6	47	
25	4	2.381	3	870	2560	36	28	62	12	49	22	44	I	12	M6×1P	6.6	34
	5	3.175	4	1440	3840	40	41	62	12	51	24	48	I	15	M6×1P	6.6	50
	10		3	1100	2810		50										38
	15		4	1410	3780		81										50
	20	2	750	1840	60	26											
	25	2	730	1810	71	26											
	6	3.969	4	2250	5710	43	45	64	12	51	24	48	I	15	M6×1P	6.6	53
	12		4	2240	5660		70										53
	25		2	1160	2720		70										28
	8	4.762	4	2880	6890	45	55	65	15	54	25.5	51	I	15	M6×1P	6.6	55
10	4		2880	6870	63		55										
16	4		2830	6790	85		55										
20	2		1470	3180	61		29										
10	6.35	5	5050	11500	51	78	84	16	67	32	64	I	15	M6×1P	9	72	

Note: Coam and Cam are the modified static and dynamic load capacities, calculated according to ISO-3408-5

Unit: mm

SCREW SIZE		BALL DIA.	EFFECTIVE TURNS	MODIFIED LOAD CAPACITY (kgf)		NUT		FLANGE						FIT	OIL HOLE	BOLT	STIFFNESS
O.D.	LEAD			Dynamic (1×10 ⁶ REV.) Cam	Static Coam	Dg6	L	A	T	W	G	H	TYPE	S	Q	X	kgf/μm
28	5	3.175	5	1850	5460	43	48	65	12	51	24	48	I	15	M8×1P	6.6	67
	6	3.969	5	2880	7980	46	52	66	12	54	26	52	I	15	M8×1P	6.6	70
	8		3	2350	5720		46										46
	10	4.762	3	2340	5710	48	52	74	12	60	30	60	I	15	M8×1P	6.6	46
	16		5	3680	9690		102										73
	10	6.35	5	5280	12530	54	78	87	16	72	34.5	69	I	15	M8×1P	9	77
	12		5	5270	12500		88										77
32	5	3.175	4	1610	4970	50	41	87	16	72	34.5	69	I	15	M8×1P	9	61
	6		5	3050	9140		52										77
	10	3.969	4	2550	7500	53	62	87	16	72	34.5	69	I	15	M8×1P	9	63
	32		2	1300	3540		90										40
	8		5	3900	10930		67										80
	10		5	3890	10910		77										80
	12	4.762	5	3890	10890	53	87	87	16	72	34.5	69	I	15	M8×1P	9	80
	15		5	3860	10850		116										80
	20		2	1700	4230		70										34
	32		2	1640	4120		90										34
	10		5	4900	13360		78										84
	12	5.556	5	4890	13340	55	88	87	16	72	34.5	69	I	15	M8×1P	9	84
	16		5	4860	13280		107										79
	20		3	3140	8110		87										53
	10		5	5720	14490		78										85
12	6.35	5	5710	14470	57	88	87	16	72	34.5	69	I	15	M8×1P	9	85	
16		4	4520	11100		92										69	
20		3	3530	8340		88										54	

Note: Coam and Cam are the modified static and dynamic load capacities, calculated according to ISO-3408-5

SCREW SIZE		BALL DIA.	EFFECTIVE TURNS	MODIFIED LOAD CAPACITY (kgf)		NUT		FLANGE					FIT	OIL HOLE	BOLT	STIFFNESS	
O.D.	LEAD			Dynamic (1×10 ⁶ REV.) Cam	Static Coam	Dg6	L	A	T	W	G	H	TYPE	S	Q	X	kgf/μm
36	8	4.762	5	4170	12580	56	63	84	11	68	34	68	I	15	M8×1P	9	86
	10		5	6050	16460		78										93
	12		5	6080	16430		88										93
	16	6.35	5	6050	16360	61	109	91	18	76	34	68	II	15	M8×1P	9	93
	20		4	4910	12890		109										76
	36		2	2570	6250		95										41
38	10		5	6260	17740		80										97
	12		5	6260	17410		88										97
	16	6.35	5	6220	17350	63	109	93	18	78	35	70	II	20	M8×1P	9	97
	40		3	3830	10220		142										71
40	5	3.175	4	1760	6260	58	42	91	18	76	34	68	II	15	M8×1P	9	71
	6	3.969	5	3420	11810	58	52	91	18	76	34	68	II	15	M8×1P	9	92
	8	4.762	4	3610	11260	60	56	91	18	76	34	68	II	15	M8×1P	9	77
	10		5	6430	18440		78										101
	12		5	6420	18410		88										101
	15		5	6380	18350		103	95	18	80	36	72	II	20	M8×1P	9	101
	16	6.35	5	6390	18330	65	108										101
	20		4	5190	14450		110	98	18	83	37	74	II	20	M8×1P	11	82
	40		2	2700	6950												43
12		5	7530	20800												103	
16	7.144	5	7500	20730	70	110	98	18	83	37	74	II	20	M8×1P	11	103	

Note: Coam and Cam are the modified static and dynamic load capacities,calculated according to ISO-3408-5

