



Choose TiMOTION for
Flexibility, Customized Products,
and Tailor-Made Services

CARE MOTION



99%

of TiMOTION's customer application requirements can be solved by providing highly customized solutions supported by our experienced personnel.

101%

TiMOTION guarantees complete customer satisfaction by providing competitive actuation solutions, coupled with a wide range of high-quality products, global service networks, and "on-demand" R&D resources.

Linear Actuators

TA series



TA10



Max. load
6,000N (push)
4,000N (pull)

Max. speed at max. load
4.2mm/s

Max. speed at no load
14.5mm/s

Retracted length
≥ Stroke + 188mm

IP rating
IP66



TA11



Max. load
1,500N (push/pull)

Max. speed at max. load
10.5mm/s

Max. speed at no load
13.1mm/s

Retracted length
≥ Stroke + 155mm

IP rating
IP66D



TA12



Max. load
12,000N (push)
6,000N (pull)

Max. speed at max. load
4mm/s

Max. speed at no load
57.3mm/s

Retracted length
≥ Stroke + 210mm

IP rating
IP66W



TA13

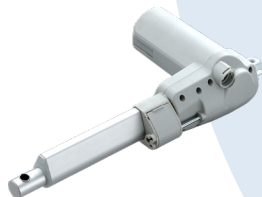


Max. load
10,000N (push)
5,500N (pull)

Max. speed at max. load
4.5mm/s

Max. speed at no load
49.4mm/s

Retracted length
 $\geq \text{Stroke} + 185\text{mm}$



TA15



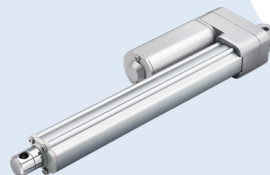
Max. load
10,000N (push)
5,500N (pull)

Max. speed at max. load
4.5mm/s

Max. speed at no load
14.4mm/s

Retracted length
 $\geq \text{Stroke} + 215\text{mm}$

IP rating
IP66



TA16



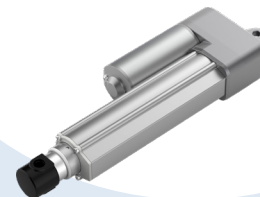
Max. load
4,500N (push)
2,500N (pull)

Max. speed at max. load
4.9mm/s

Max. speed at no load
56.5mm/s

Retracted length
 $\geq \text{Stroke} + 112\text{mm}$

IP rating
IP66M



TA19



Max. load
1,000N (push)

Max. speed at max. load
18mm/s

Max. speed at no load
64mm/s

Retracted length
 $\geq \text{Stroke}/2 + 165\text{mm}$

Linear Actuators

TA series



TA21



Max. load
10,000N (push)
6,000N (pull)

Max. speed at max. load
6.3mm/s

Max. speed at no load
24.7mm/s

Retracted length
≥ 67mm



TA23



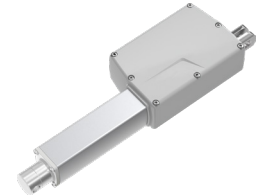
Max. load
10,000N (push)
4,000N (pull)

Max. speed at max. load
3.2mm/s

Max. speed at no load
39mm/s

Retracted length
≥ Stroke + 163mm

IP rating
IP66W



TA29



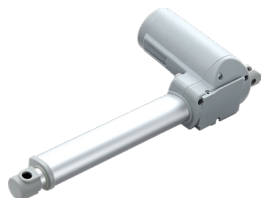
Max. load
6,000N (push)
3,500N (pull)

Max. speed at max. load
3mm/s

Max. speed at no load
30.2mm/s

Retracted length
> 178mm (depending on
chosen options)

IP rating
IP66W



TA31



Max. load

8,000N (push)
3,000N (pull)

Max. speed at max. load

3.7mm/s

Max. speed at no load

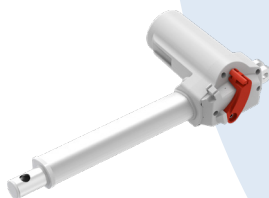
26.6mm/s

Retracted length

≥ Stroke + 157mm

IP rating

IP66W



TA31QR



Max. load

5,000N (push)
3,000N (pull)

Max. speed at max. load

4.9mm/s

Max. speed at no load

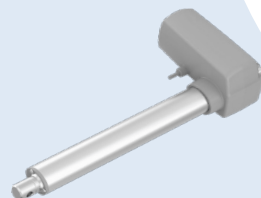
11.2mm/s

Retracted length

≥ Stroke + 178mm

IP rating

IP66W



TA36



Max. load

10,000N (push)
6,000N (pull)

Max. speed at max. load

5.4mm/s

Max. speed at no load

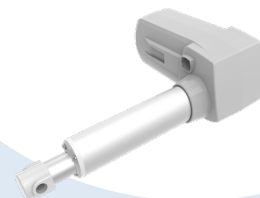
13.9mm/s

Retracted length

≥ Stroke + 170mm

IP rating

IP66W



TA37



Max. load

12,000N (push)

Max. speed at max. load

5.3mm/s

Max. speed at no load

31.1mm/s

Retracted length

≥ Stroke + 170mm

IP rating

IP66W

Linear Actuators

TA series



TA38M



Max. load
2,000N (push)
1,500N (pull)

Max. speed at max. load
6.2mm/s

Max. speed at no load
20mm/s

Retracted length
≥ 160mm (depending on
chosen options)

IP rating
IP66



TA41



Max. load
8,000N (push)
4,000N (pull)

Max. speed at max. load
4.3mm/s

Max. speed at no load
39mm/s

Retracted length
≥ Stroke + 163mm



TA49



Max. load
6,000N (push)
2,000N (pull)

Max. speed at max. load
4.4mm/s

Max. speed at no load
14.7mm/s

Retracted length
≥ Stroke + 157mm

IP rating
IP66W

NEW



TA50

Max. load

8,000N (push)
6,000N (pull)

Max. speed at max. load

3.7mm/s

Max. speed at no load

26.6mm/s

Retracted length

≥ Stroke + 157mm

IP rating

IP66



TT1



Max. load

6,000N (push)

Max. speed at max. load

4.6mm/s

Max. speed at no load

6.8mm/s

Dimension between shaft

581mm

IP rating

IPX6

Gear Motors

TGM series



TGM5



Max. rated torque
18.3Nm

Max. speed at max. load
88RPM ($\pm 5\%$)

Max. speed at no load
117RPM ($\pm 5\%$)

IP rating
IP66W

Certificate
UL962



Lifting Columns

TL
series



TL3



Max. load
4,000N (push)

Self-locking force
4,000N

Max. dynamic bending moment
1,000Nm

Max. speed at max. load
13.7mm/s

Max. speed at no load
39mm/s

Retracted length
 $\geq \text{Stroke}/2 + 150\text{mm}$

IP rating
IPX6



TL8



Max. load
2,000N (push)

Max. dynamic bending moment
500Nm

Max. speed at max. load
9.6mm/s

Max. speed at no load
32.6mm/s

Retracted length
 $\geq (\text{Stroke}/2) + 150\text{mm}$

IP rating
IPX6



TL17



Max. load
2,000N (push)

Max. dynamic bending moment
250Nm

Max. speed at max. load
11.5mm/s

Max. speed at no load
41mm/s

Retracted length
 $\geq \text{Stroke}/2 + 150\text{mm}$

IP rating
IPX6



TL18



Max. load
4,500N (push)

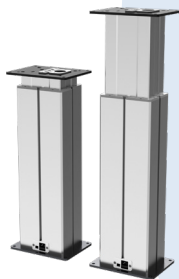
Self-locking force
4,500N

Max. dynamic bending moment
250Nm

Max. speed at max. load
6.6mm/s

Max. speed at no load
45mm/s

Retracted length
≥ Stroke + 147mm



TL18AC



Max. load
4,500N (push)

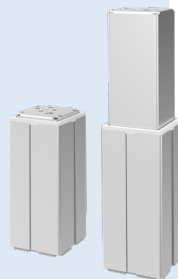
Self-locking force
4,500N

Max. dynamic bending moment
250Nm

Max. speed at max. load
6.6mm/s

Max. speed at no load
45mm/s

Retracted length
≥ 383mm



TL24



Max. load
3,300N (push)

Max. dynamic bending moment
200Nm

Max. speed at max. load
6.5mm/s

Max. speed at no load
38mm/s

Retracted length
≥ Stroke + 188mm

IP rating
IPX6



TL27



Max. load
3,300N (push)

Self-locking force
3,300N

Max. dynamic bending moment
200Nm

Max. speed at max. load
6.5mm/s

Max. speed at no load
38mm/s

Retracted length
≥ Stroke + 256mm

Lifting Columns

TL
series



TL50



Max. load
1,150N (push)

Self-locking force
1,150N

Max. dynamic bending moment
542.5Nm

Max. speed at max. load
32.2mm/s

Max. speed at no load
49.4mm/s

Retracted length
 $\geq \text{Stroke} + 500\text{mm}$



TL51



Max. load
6,000N (push)

Self-locking force
6,000N

Max. dynamic bending moment
1,000Nm ($\geq \text{Stroke}/2 + 180\text{mm}$)
1,400Nm ($\geq \text{Stroke}/2 + 240\text{mm}$)

Max. speed at max. load
8.6mm/s

Max. speed at no load
26.2mm/s

Retracted length
 $\geq \text{Stroke}/2 + 180\text{mm}$
 $\geq \text{Stroke}/2 + 240\text{mm}$

IP rating
IPX4



TL52



Max. load
3,300N (push)

Self-locking force
3,300N

Max. dynamic bending moment
250Nm

Max. speed at max. load
6.5mm/s

Max. speed at no load
38mm/s

Retracted length
 $\geq \text{Stroke} + 256\text{mm}$



TL54



Max. load
2,000N (push/pull)

Self-locking force
2,000N

**Max. dynamic
bending moment**
250Nm

Max. speed at max. load
12mm/s

Max. speed at no load
21mm/s

Retracted length
 \geq Stroke + 150mm

IP rating
IPX6

Control Boxes



TC8 Series

- Number of motors: 1~7
- Number of controls: 1~3
- IP rating: IP66



TC12 Series

- Number of motors: 1~3
- Max. output: 24V DC, 10A
- IP rating: IP66
- Options: LCD display, LED power indicator



TC12AC Series

- Number of motors: 1~3
- Max. output: 24V DC, 10A
- IP rating: IP54
- Options: LCD display, LED power indicator



TC14 Series

- Number of motors: 1~4
- IP rating: IP66
- Options: Wireless module (optional)



TC17 Series

- Number of motors: 1~4
- Max. output: 32V DC, 6.25A



TC20 Series

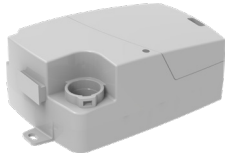
- Number of motors: 1~3
- Max. output: 24VDC, 10A
- IP rating: IP66
- Options: MCU, battery LED indicator, cable organizer



TC21 Series

- Number of motors: 1~5
- Number of controls: 1~2
- Max. output: 32V DC, 10A
- IP rating: IP66W

Control Boxes



TC26 Series

- Number of motors: 1~3
- Number of controls: 1
- Max. output: 32V DC, 6A
- IP rating: IP66
- Options: Supports cord buckle and buzzer



TC28 Series

- Number of motors: 1~4
- Number of controls: 1~2
- Max. output: 16A, 350W
- IP rating: IP66W
- Options: Wireless support





Back-Up Power



TBB2 Series

- Battery type: Lead acid, Lithium
- Capacity: 1.2Ah
- Discharging voltage: 24V DC, 1.2A



TBB4 Series

- Battery type: Lead acid
- Capacity: 1.2 or 2.2Ah
- Discharging voltage: 24V DC, 2A



TBB5 Series

- Battery type: Lithium iron
- Capacity: 4Ah
- Discharging voltage: 24V DC, 4A



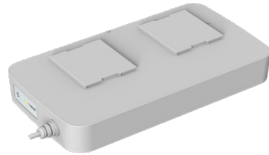
TBB6 Series

- Battery type: Lead acid
- Capacity: 2.9 or 5Ah
- Discharging voltage: 24V DC, 2.9/5A



TBB7 Series

- Battery type: Lead acid, Lithium
- Capacity:
2.9/5Ah (Lead acid);
2.5/4.5/10Ah (Lithium)
- Discharging voltage:
24V DC, 2.9/5A



TBB10 Series

- Battery type: Lithium
- Capacity:
25.2V DC/2500mAh
- Discharging voltage:
25.2V DC



Power Supplies



TP4 Series

- Transformer type: Toroidal or SMPS
- Input voltage: 110/120/230 V AC or 100~240V AC (SMPS)
- Max. output: 36V DC, 9A



TP6 Series

- Transformer type: SMPS
- Input voltage: 100~240V AC
- Max. output: 31.5V DC, 12A



TP7M Series

- Transformer type: SMPS
- Input voltage: 100~240V AC
- Max. output: 29V DC, 3.75A



TP8 Series

- Transformer type: SMPS
- Input voltage: 100~240V AC
- Max. output: 29V DC, 6.25A



TP9 Series

- Transformer type: SMPS
- Input voltage: 100~240V AC
- Max. output: 36V DC, 2A



Controls



TH1



TH2



TH7



TH10



TH12



TH21



TH24



TH26



TH30



TMH1



TMH3



TMH5



TMH7



TMH9

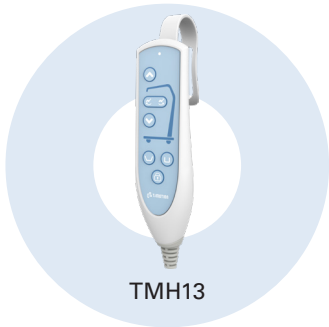


TMH11

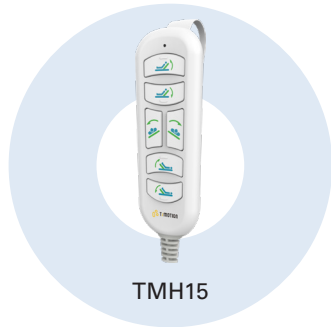


TMH12

Controls



TMH13



TMH15



TMH16



TMH17



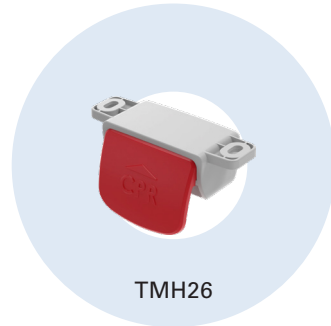
TMH18



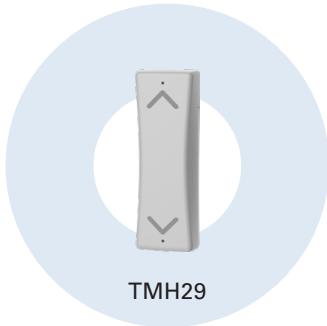
TMH19



TMH21



TMH26



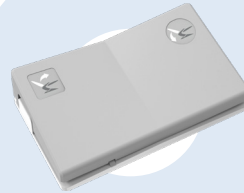
Controls



TFS7



TFS8



TFS9



TFS10



TNP1



TNP2



TNP3



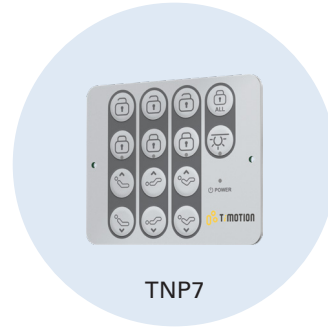
TNP4



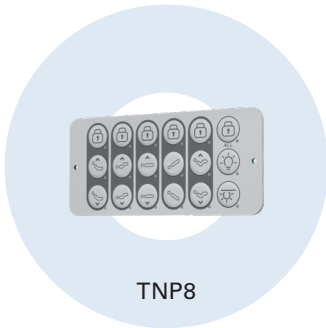
TNP5



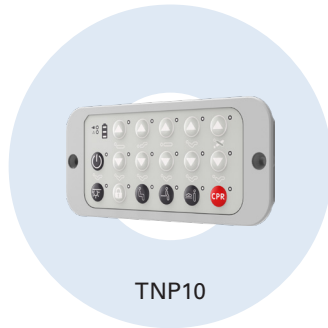
TNP6



TNP7



TNP8



TNP10



TFH1



Accessories



TAB2
Alarm Buzzer



TBC2
Battery Charger



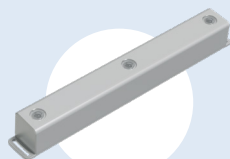
TBC3
Battery Charger



TBL
Bed Bottom Light



TBL2
Bed Bottom Light



TBL3
Bed Bottom Light



TCR
AC Cable Reel



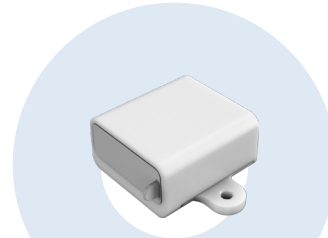
TEB
Emergency Button



TEB2
Emergency Button



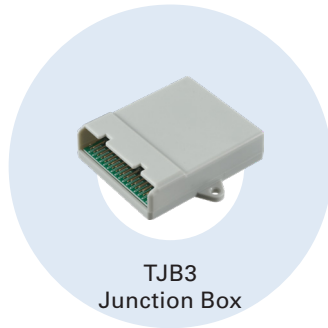
TES
External Switch



TFA5
USB Chargers



TJB2
Junction Box



TJB3
Junction Box

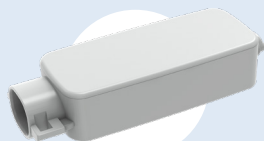


TJB4
Junction Box

Accessories



TJB5
Junction Box



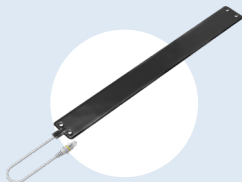
TJB11
Junction Box



TLB
Lock Box



TNC
Nurse Call



TPS
Pressure Sensor



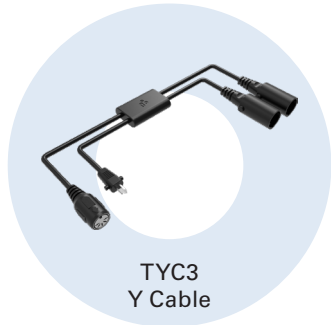
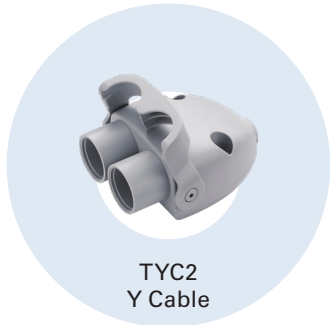
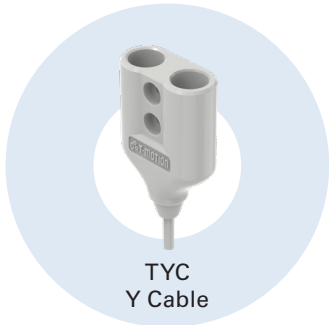
TRF2
Wireless Receiver



TRF4
Wireless Receiver



TRL1
Reading Light



Terms of Use

The user is responsible for determining the suitability of TiMOTION products for a specific application. TiMOTION takes great care in providing accurate and up-to-date information on its products. However, due to continuous development, frequent modifications and changes to products may occur without prior notice. It is for this reason that TiMOTION cannot guarantee the correct and actual status of said information on its products, nor can it guarantee the availability of any particular product.

Therefore, TiMOTION reserves the right to discontinue the sale of any product displayed on its website or listed in its catalogues or other written material produced by TiMOTION.

For the most accurate and up-to-date information on our products, please visit TiMOTION's website.

www.timotion.com



Every Day is Earth Day

TiMOTION uses FSC certificated paper in order to help care for our forests, as well as the people and wildlife who call them home.



Taiwan & China

+886 2 2219 6633
sales.tw@timotion.com

Australia

+61 3 8725 0331
salesteam.au@timotion.com

Europe

+33 (0)1 74 82 50 51
sales.eu@timotion.com

Japan

+81 6 6713 1188
sales.jp@timotion.com

USA

(704) 708 6924
sales.us@timotion.com

Korea

+82 31 745 1060
sales@timotion.co.kr



For the latest
product information

Updated: Apr 2024